



## I-205 / PORTLAND MALL MAX LIGHT RAIL PROJECT

# I-205 Light Rail Project's Public Art Program

TriMet is continuing its commitment to public art with the I-205 Light Rail Project, and has allocated \$495,000 for the I-205 public art program from 1.5 percent of eligible project funds.

## New Art

The Public Art Advisory Committee selected seven artists to create a wayfinding sculpture at each station along the 6.5-mile extension between Gateway and Clackamas Town Center. In addition, each station will feature windscreen art glass designed by Kim Hamblin and uniquely colored, glass-tiled shelter columns.

A report on the cultural history of the neighborhoods along the alignment was commissioned by the committee to assist the artists as they developed concepts for the artwork. The report is available online at [trimet.org/i205/publicart.htm](http://trimet.org/i205/publicart.htm).

## Public art final designs



"Ginkgo Column" by artist Anne Storrs was inspired in part by Ginkgo trees planned for the station landscaping.

### SE Main St Station, Anne Storrs

Abstracted ginkgo leaves of cast stone are stacked and interlocked to form a columnar sculpture on the platform. Individual leaf sculptures will be placed near the station entrance.

### SE Division St Station, Carolyn Law

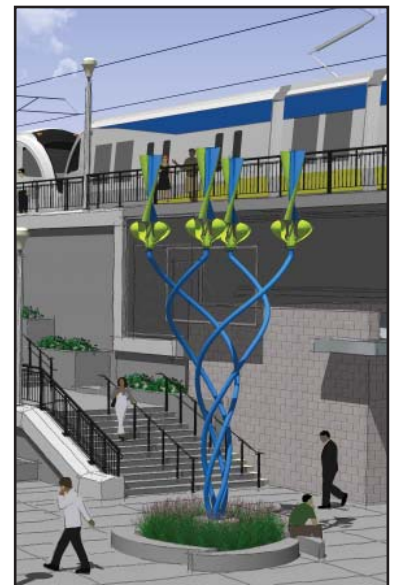
A sky-blue sculptural fence will undulate along the west side of the station platform area.

### SE Powell Blvd Station, Valerie Otani

Combining references to the Han Dynasty "Money Tree" and Douglas fir, this sculptural tree features designs based on the cut-paper traditions of several cultures.

### SE Holgate Blvd Station, Suzanne Lee

Five ornate lanterns are the central elements of this multicultural sculpture. Sited above the station platform, the illuminated sculpture will appear like a beacon at night.



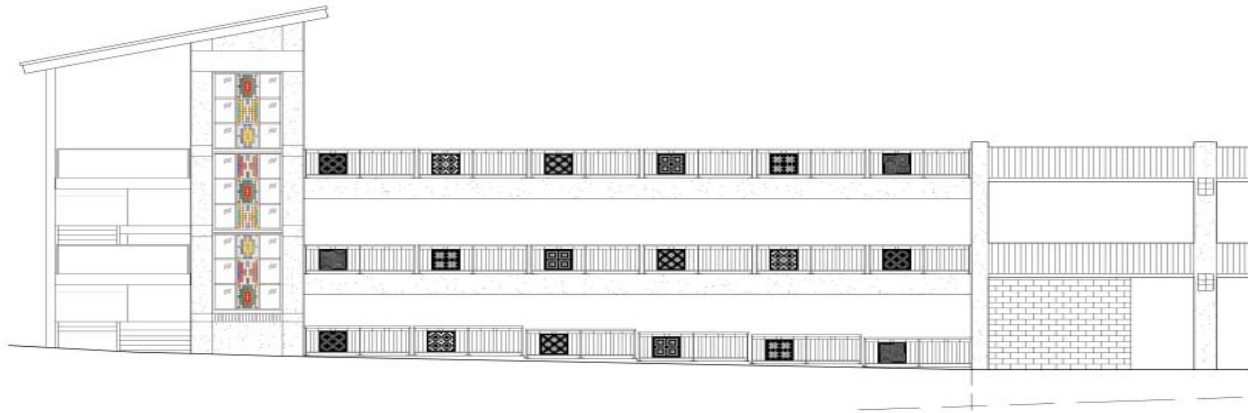
Brian Borrello's spiraling sculpture at the Lents Town Center/SE Foster Rd Station incorporates renewable energy for movement and illumination.

### Lents Town Center/SE Foster Rd Station, Brian Borrello

Art merges with sustainable technology at this station. The thistle-like tops of three spiraling sculptures are animated by the wind and illuminated by the sun with photovoltaic cells.

### SE Flavel St Station, Brian Borrello

The tributaries of the Johnson Creek watershed are portrayed in five colored-concrete paving inserts set in the station plaza.



*Richard C. Elliott's installation, "Twisted Ribbon," and cut-metal guardrail panels enhance the Clackamas Town Center Transit Center parking garage (detail).*

### SE Fuller Rd Station, Pete Beeman

A tall, kinetic sculpture at the north end of the station has a crank at its base that patrons can turn to wave its wing-like structures.

### Clackamas Town Center Transit Center, Richard C. Elliott

An installation of multi-colored reflectors brightens the glass elevator tower at the parking garage while pioneer quilt patterns are featured in the guardrails. Brickwork on the station platform is based on a Lower Columbian Native American basket weave pattern.

### TriMet's Public Art Program

TriMet's Public Art Program promotes transit use and community pride by integrating permanent and temporary art works into the public transit system, celebrating the contributions of public transportation and recognizing the cultural richness in the region.

### For more information

For more information, contact Public Art Manager Mary Priester at 503-962-2291 or [priestem@trimet.org](mailto:priestem@trimet.org), or Public Art Coordinator Michelle Traver at 503-962-2159 or [traverm@trimet.org](mailto:traverm@trimet.org).

### Stay informed

To learn more about the I-205/Portland Mall Light Rail Project, visit [trimet.org/i205](http://trimet.org/i205) or contact the project's Community Affairs staff at 503-962-2150.

#### TriMet Public Art Advisory Committee

- Steve Fosler**, Architect
- Junko Iijima**, Artist, Clackamas Community College instructor
- Neil McFarlane**, Executive Director, TriMet Capital Projects and Facilities
- Kate Mytron**, Lents Neighborhood Association
- Loren Nelson**, Photographer
- Tabor Porter**, Artist
- Cheryl Snow**, Executive Director, Arts Action Alliance of Clackamas

The I-205/Portland Mall project is a partnership between:



### For alternative formats

Contact us at:  
 503-238-RIDE (7433)  
[customerservice@trimet.org](mailto:customerservice@trimet.org)  
 TTY 503-238-5811