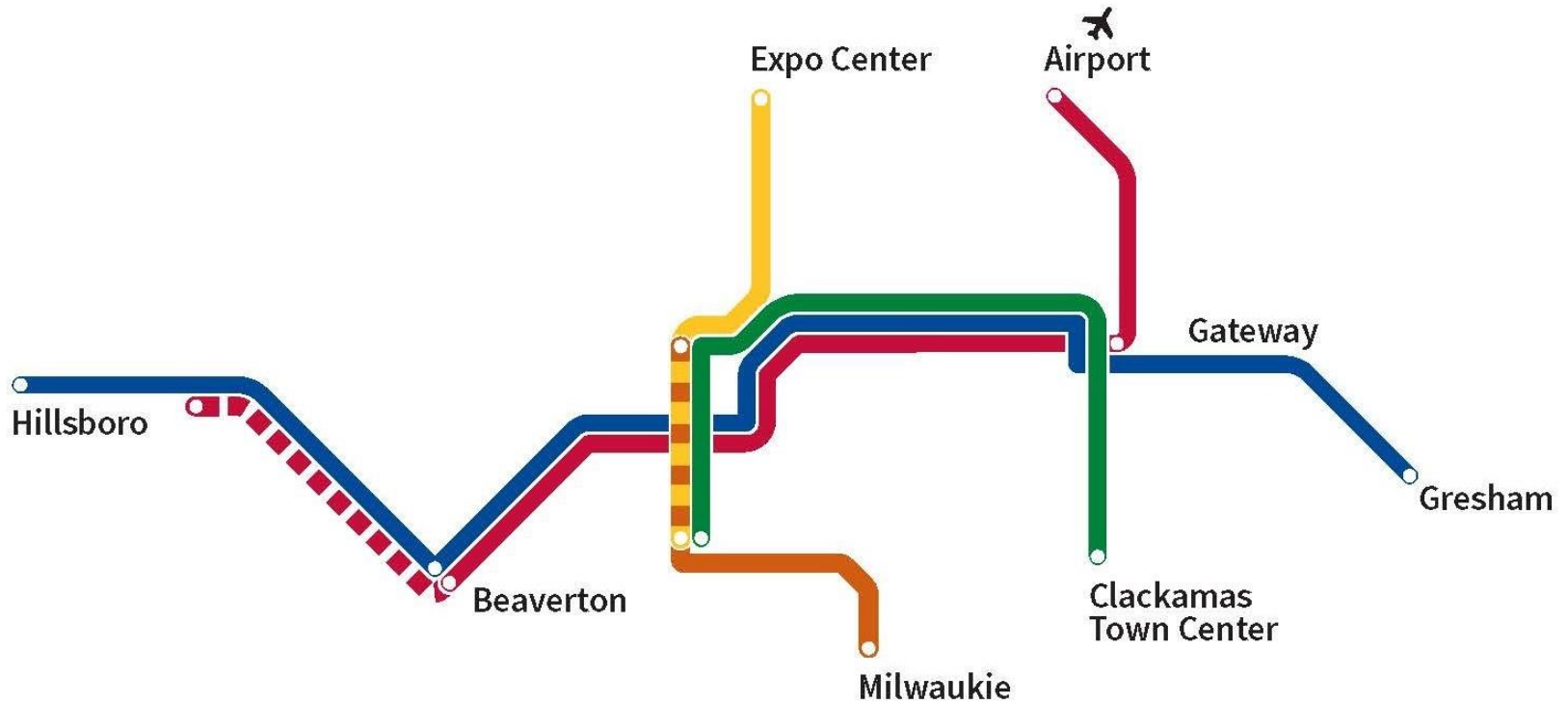


A BETTER RED



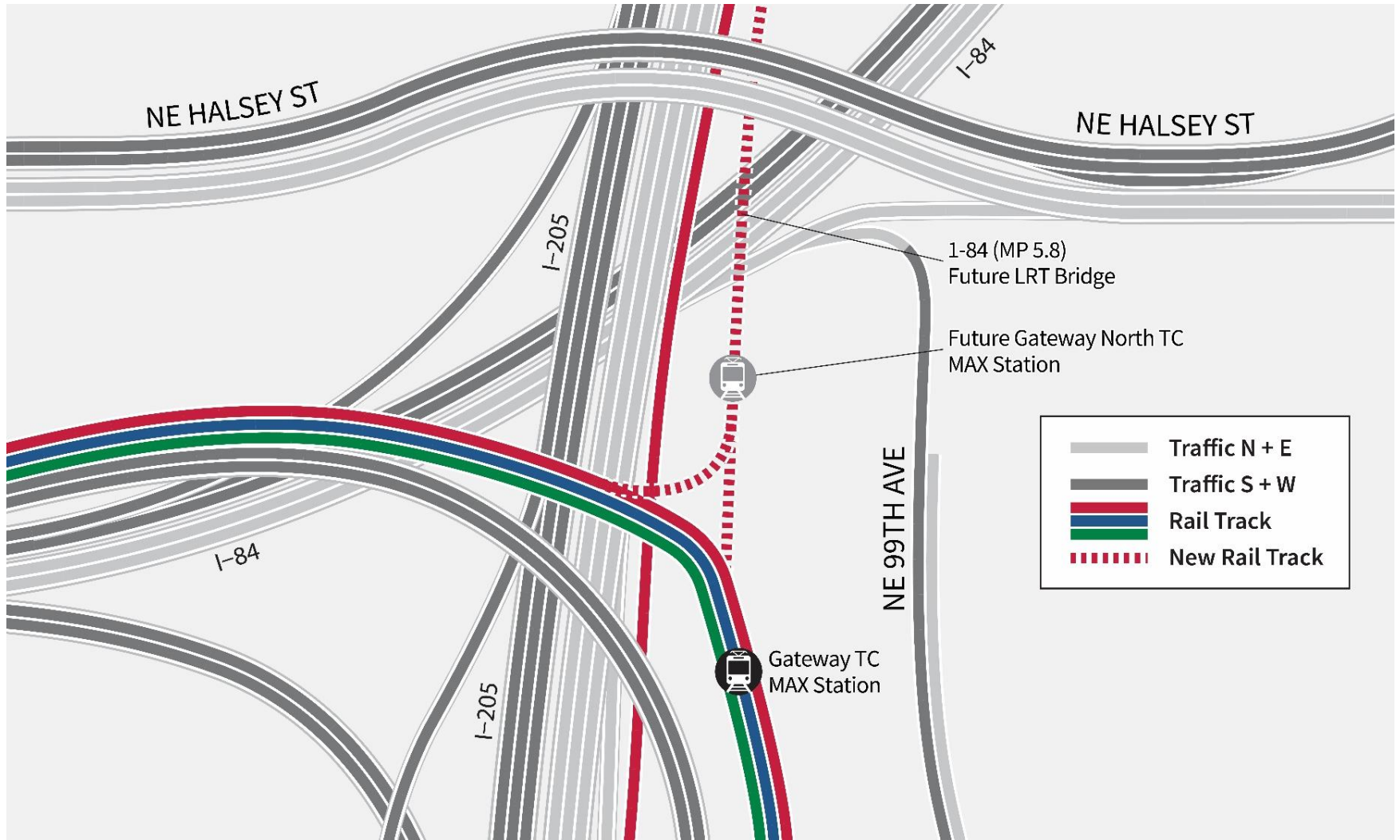
A Better Red extends MAX Red Line west to serve 10 more stations and improves schedule reliability for the entire MAX system.



Project benefits

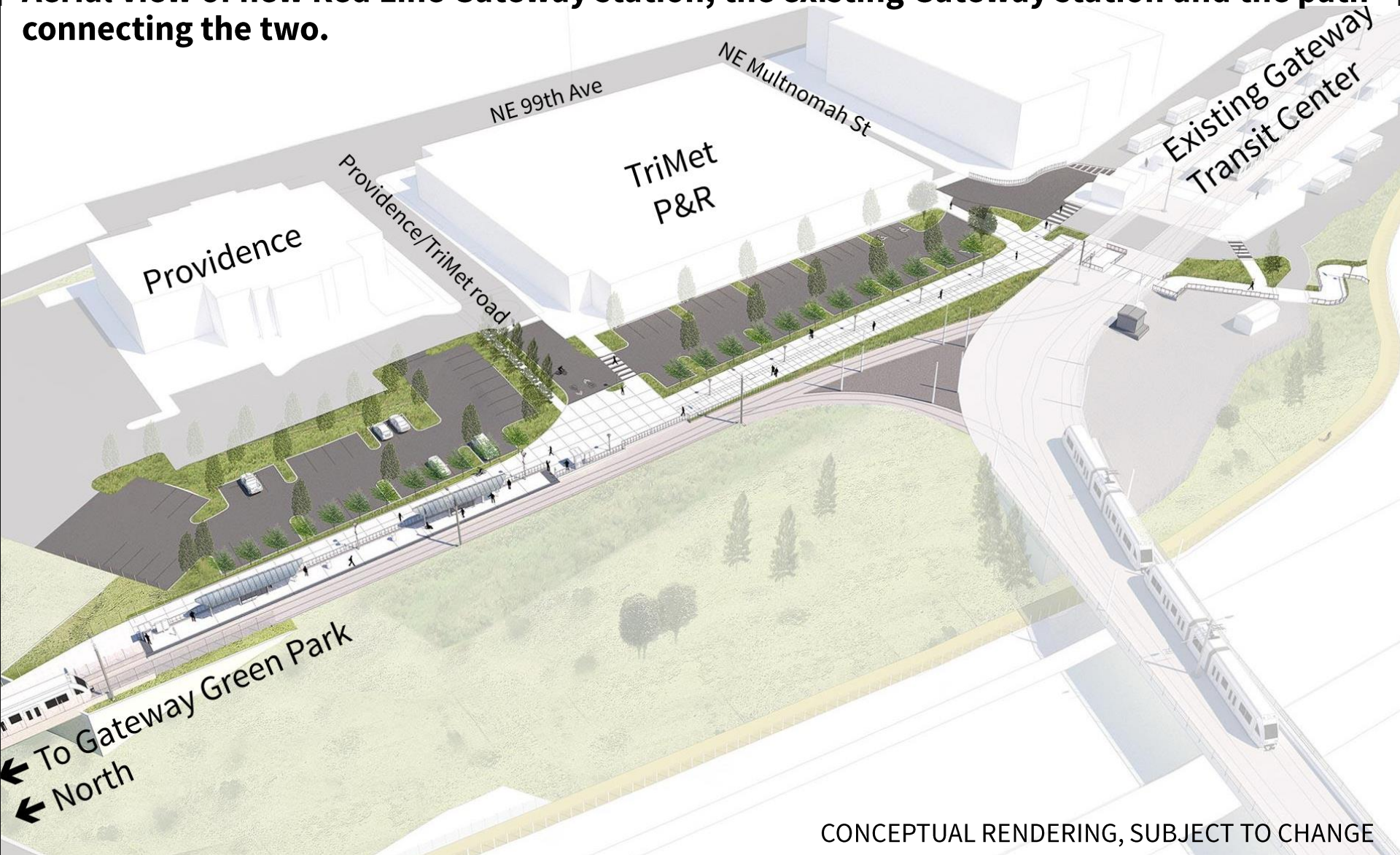
- Extends MAX Red Line west to serve 10 more stations and improves reliability for the entire MAX system
- Adds new multi-use paths at Gateway and PDX
- Creates up to 1,200 jobs
- Includes ambitious goals for Disadvantaged Business Enterprise (DBE) contracting
- Leverages about \$100 m federal funding

Gateway



Gateway

Aerial view of new Red Line Gateway station, the existing Gateway station and the path connecting the two.



CONCEPTUAL RENDERING, SUBJECT TO CHANGE

Gateway

Aerial view of the new Red Line Gateway Station looking north towards the I-84 bridge and Gateway Green Park.



CONCEPTUAL RENDERING, SUBJECT TO CHANGE

Gateway

View of the multi-use path next to the new Red Line Gateway Station looking south to the existing Gateway Light Rail Station.



CONCEPTUAL RENDERING, SUBJECT TO CHANGE

Gateway

Aerial view looking from south toward Gateway Green Overcrossing.



Design:

AS OF SPRING 2021

40

firms have worked the on project

30

firms are based in the region

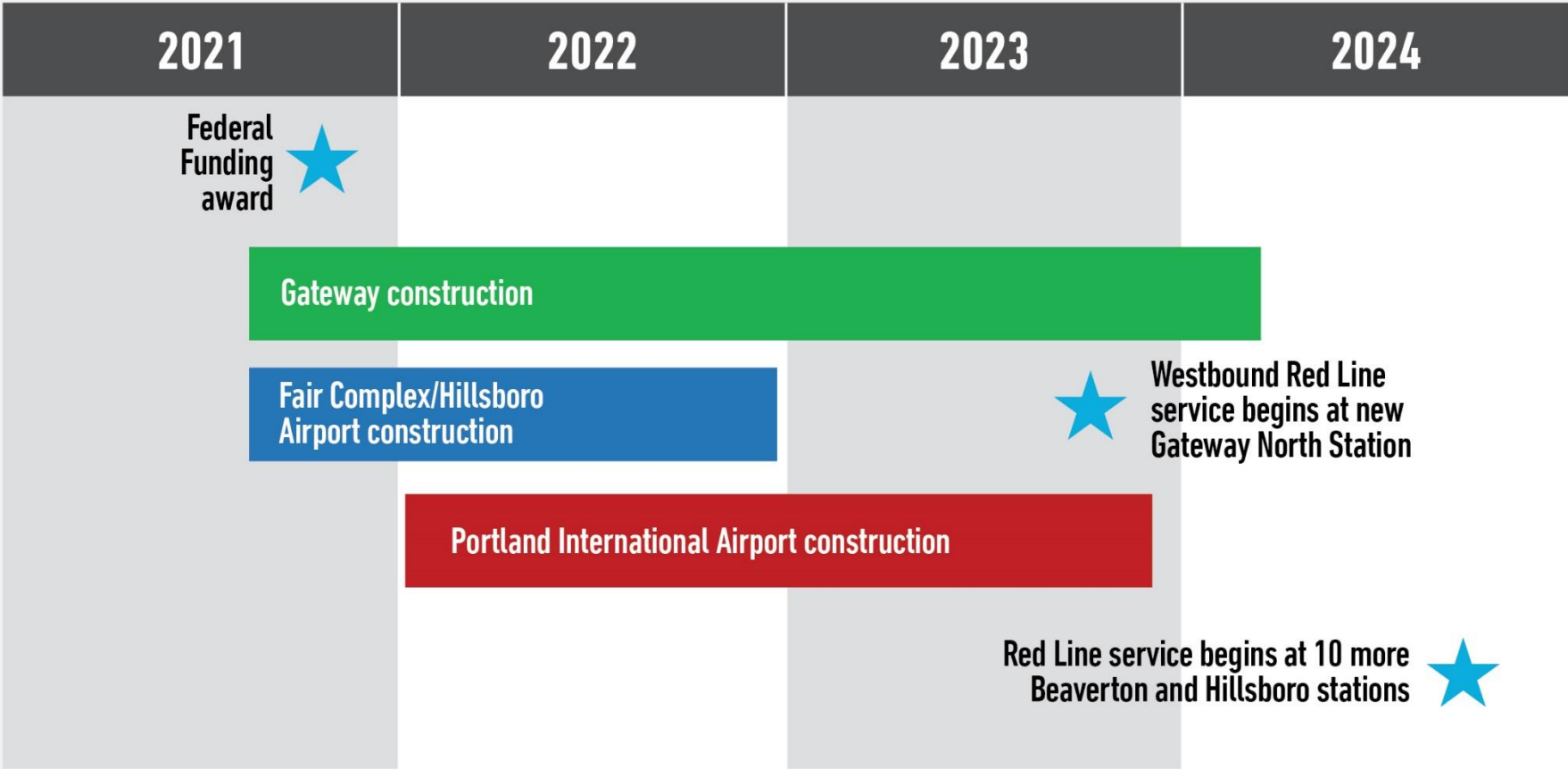
24

are certified DBE and Minority Business
Enterprise and Women Business
Enterprise firms

19%

of project design work has been awarded
to DBE firms

ESTIMATED PROJECT SCHEDULE



Park and parking closures starting summer 2021, through late 2023

September
Gateway Green Park
(south end)

November
Providence parking lot
(west side)

August
TriMet Park & Ride
(surface lot west of garage)

TriMet's construction ethic

- Safety
- Minimize impacts to neighbors while maximizing construction efficiencies
- Community Affairs staff – liaison for neighbors
 - Gather information about access, operational needs
 - Collaborate with contractor to plan and adjust construction activities
 - Frequent communications; what to expect in advance; on-call 24/7
- trimet.org/betterred

What to expect during construction

- MAX service interruptions, with shuttle buses (6)
- Lane closures, including nights on I-84
- Occasional closure of I-84 eastbound Exit 7–Halsey
- Weekend closures of I-84 (2)
- Daytime pile driving adjacent to I-84
- Nighttime and weekend construction
- Partial parking and park closures
- MUP impacts

Better Red Station Area Planning

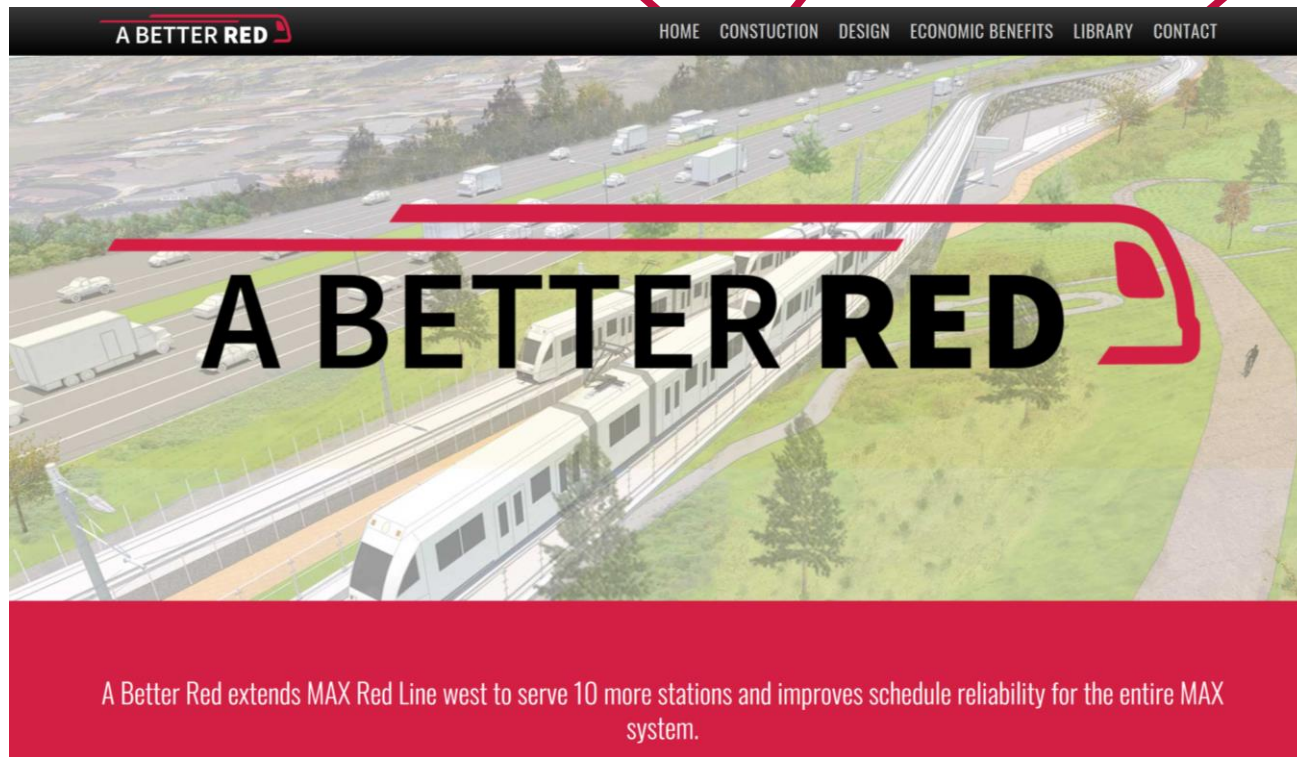
- FTA grant for transit oriented development (TOD) and station area planning at key Red Line stations
- ECONorthwest leading two-year study
 - Economic analysis
 - Business and resident stabilization
 - Zoning analysis, recommendations
 - Station area plans
- Build on past studies
 - Equitable development outcomes
 - Public-private partnerships

trimet.org/betterred

HOME:
Video with
Gateway flyover

CONSTRUCTION:
Weekly updates

CONTACT:
Sign up for email
updates



Comments & Questions?

trimet.org/BetterRed

Email: BetterRed@trimet.org

Phone: 503.962.2150

Libby Winter

Email: WinterLi@trimet.org

Cell: 503.983.3930