

A BETTER RED



FRIENDS OF
GATEWAY GREEN

Friends of Gateway Green Board Meeting
July 6, 2021

Gateway Green Trail Map



Easy
Principiante
Tập Sự



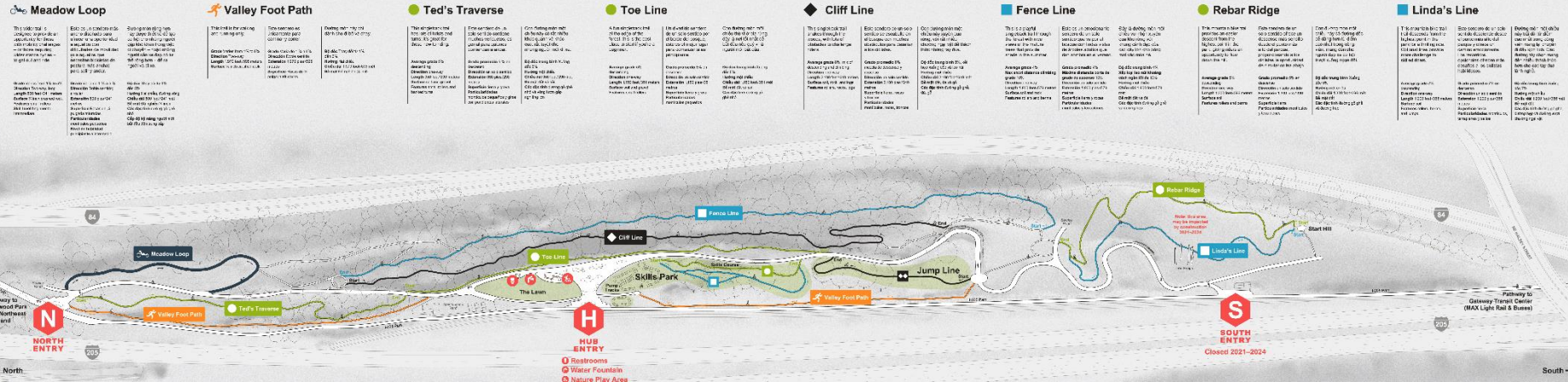
More difficult
Intermedio
Trung Cấp



Very difficult
Avanzado
Nâng Cao



Extremely difficult
Experto
Chuyên Gia



Linda's Line Rebar Ridge



YouTube links:

English: <https://youtu.be/0udaEI7x9Y0>

En Español: https://youtu.be/0mlb_xuY_dl

Project Benefits

- Extends MAX Red Line west to serve 10 more stations
- Improves reliability for the entire MAX system
- Adds new multi-use paths at Gateway and PDX
- Creates up to 1,200 jobs
- Includes ambitious goals for Disadvantaged Business Enterprise (DBE) contracting
- Leverages about \$100 m federal funding



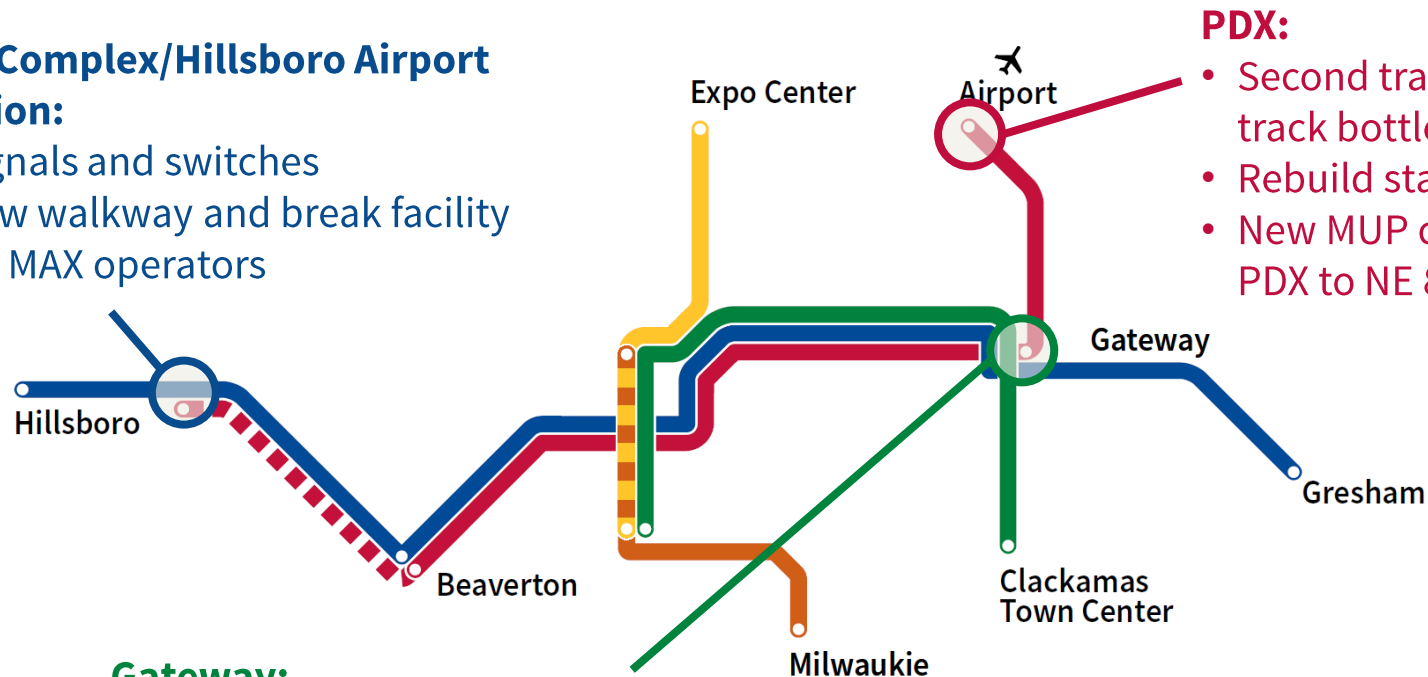
ESTIMATED PROJECT SCHEDULE



Construction Areas

Fair Complex/Hillsboro Airport Station:

- Signals and switches
- New walkway and break facility for MAX operators



PDX:

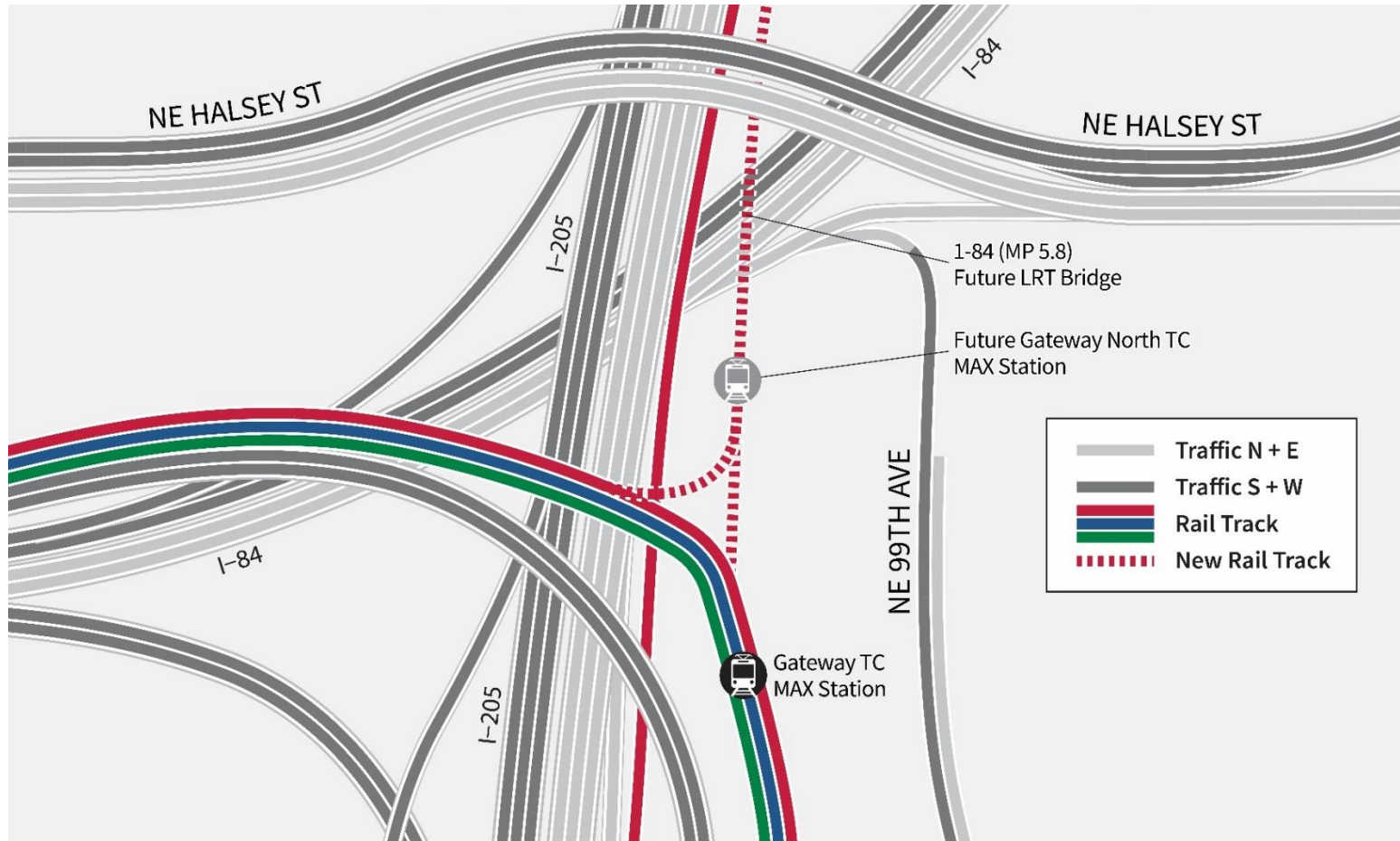
- Second track at single-track bottleneck
- Rebuild station platform
- New MUP connecting PDX to NE 82nd Way

Gateway:

- Second track at single-track bottleneck
- Two bridges:
 - Over existing MAX track and I-205 MUP
 - Over I-84 and UPRR tracks, with new MUP to Gateway Green Park
- New station platform for Red Line trains heading toward City Center

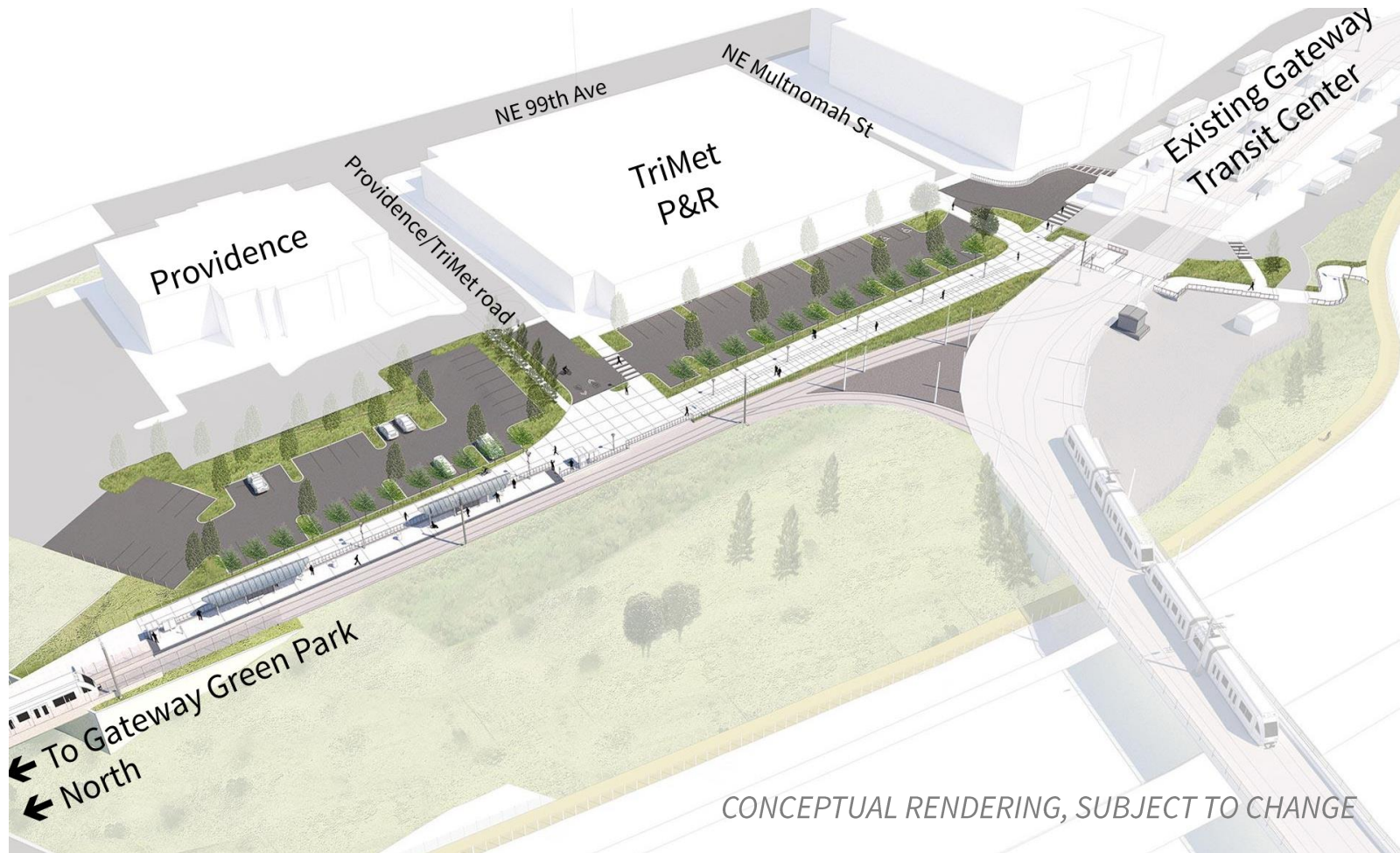
Gateway Area

Diagram of new light rail second track



Gateway Area

Aerial view of new Red Line (in-bound only) station, the existing Gateway station and the path connecting the two



Gateway Area

Aerial view of the new inbound light rail station, multi-use path, and Providence parking lot.



Gateway Area

New light rail and multiuse path overpass over I-84



CONCEPTUAL RENDERING, SUBJECT TO CHANGE

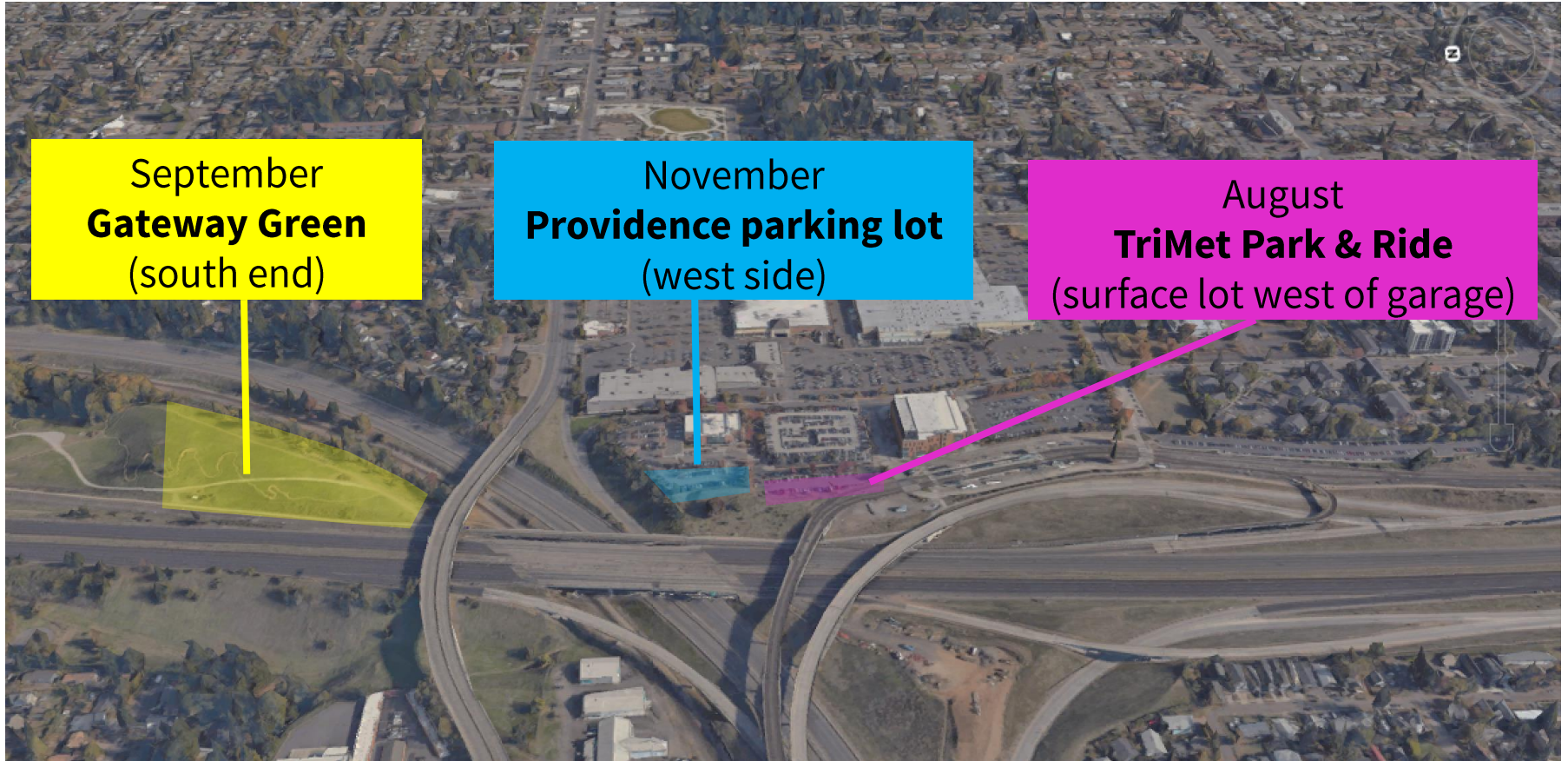
Gateway Area

Aerial view looking south toward the multi-use path and Gateway Green light rail overcrossing



Construction Closures

Starting summer 2021 through 2024



September
Gateway Green
(south end)

November
Providence parking lot
(west side)

August
TriMet Park & Ride
(surface lot west of garage)

Gateway Green – Three Phases

Phase 1 – opened 2017

- ‘Dirtlab,’ new trails, jump line, skills area

Phase 2 – opened 2020

- Pump track, hub gathering area and expanded trails
- Gravity lines on the south end of the park:
temporary, to be replaced after TriMet Better Red
construction (Linda’s Line; Rebar Ridge)

Phase 3 – opening 2024

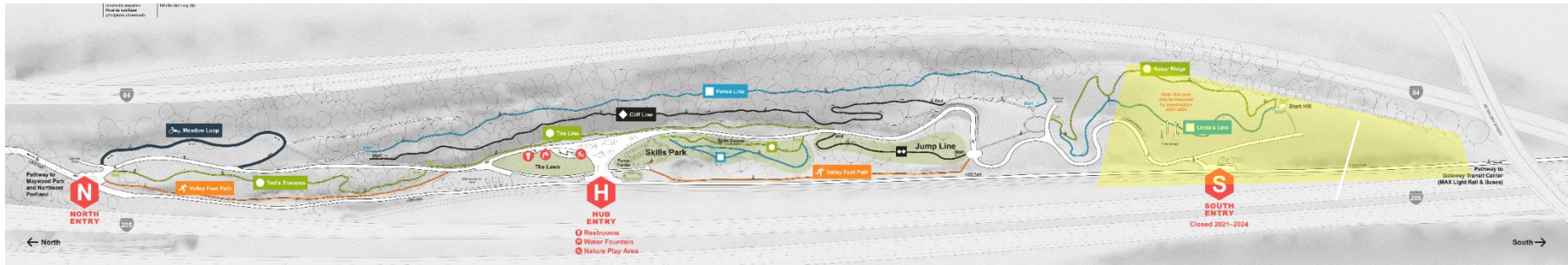
- New pedestrian and bike bridge connection to
Gateway Transit Center
- Regraded for longer run and more vertical drop

Gateway Area

Plan view of future Gateway Green trails



Gateway Green Construction Closure



Gateway Green Construction Closure

South end **closures** beginning September 2021 through 2024:

- South entrance
- Upper sections of Linda's Line trail
- Upper sections of Rebar Ridge

Central and north sections of the Gateway Green will remain **OPEN** during construction:

- Jump line
- Skills area
- Asphalt pump track
- Playground
- Concrete speed ring
- "Hub" gathering area
- Single track trails in the woods/north end

2024

TriMet will:

- Open new bridge over I-84, with **new multi-use path** access for bicycles, pedestrians, and emergency vehicles
- **Extend gravel “spine road”** south to the hilltop and new bridge
- **Regrade slope** to provide approximately 80 yards of increased run and at least 10 feet more vertical drop
- Replace approximately 15 trees that must be removed for construction with more than **80 new trees**

Portland Parks and partners will construct Linda’s Line and Rebar Ridge.

TriMet's Construction Ethic

- Safety
- Minimize impacts to neighbors while maximizing construction efficiencies
- Community Affairs staff – liaison for neighbors
 - Gather information about access, operational needs
 - Collaborate with contractor to plan and adjust construction activities
 - Frequent communications; what to expect in advance; on-call 24/7



What Else to Expect During construction

- MAX service interruptions, with shuttle buses (6)
- Lane closures, including nights on I-84
- Occasional closure of I-84 eastbound Exit 7–Halsey
- Weekend closures of I-84 (2)
- Night closures of westbound I-84 (1-3 weeks)
- Daytime pile driving adjacent to I-84
- Night and weekend construction
- Multi-use path impacts

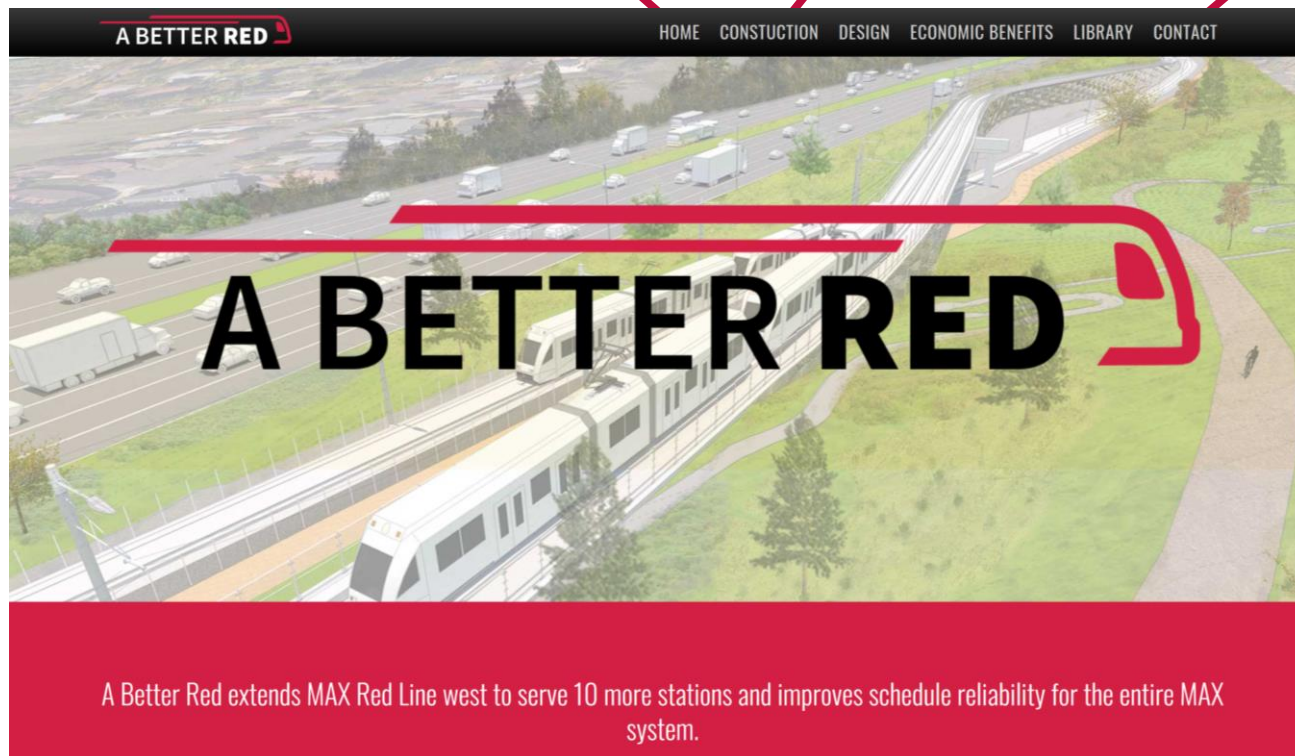


trimet.org/betterred

HOME:
Video with
Gateway flyover

CONSTRUCTION:
Weekly updates

CONTACT:
Sign up for email
updates



Comments & Questions?

trimet.org/BetterRed

Email: BetterRed@trimet.org

Phone: 503.962.2150

Libby Winter

Email: WinterLi@trimet.org

Cell: 503.983.3930