

TriMet Board of Directors Retreat November 2016

Regional Transportation Funding Strategy

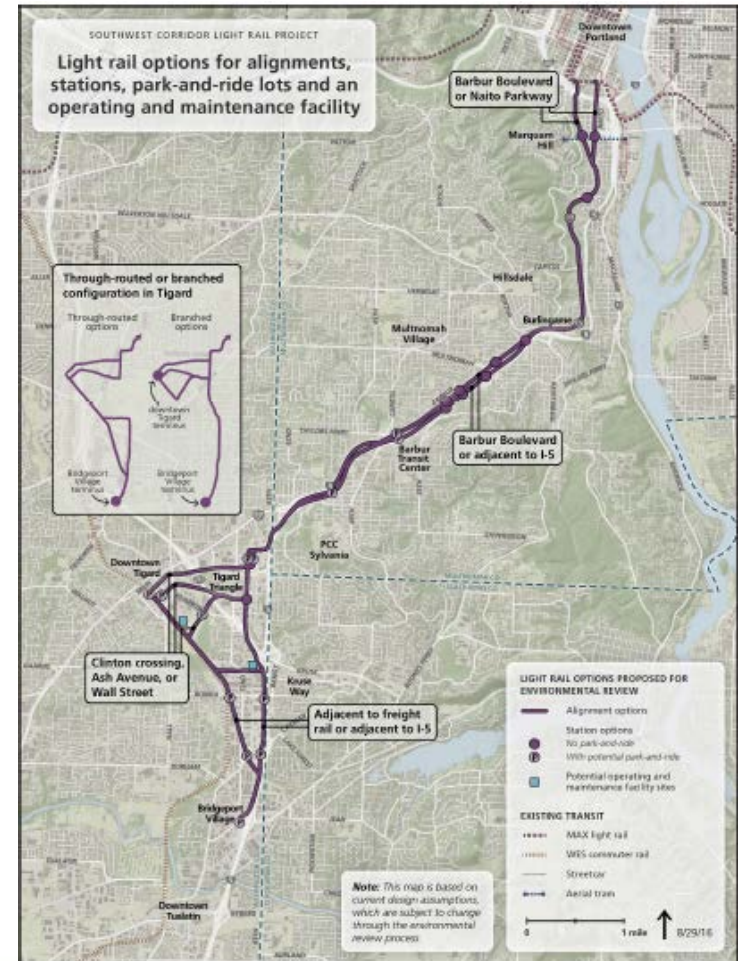


SW Corridor Challenges

- Fast growing area with limited travel options
- Eleven percent of regional population, 26% of population
- Five colleges & universities with 45,000 students
- Transit ridership in the corridor expected to grow by 80% by 2035
- Level of growth and demand can't practically be served by increased bus frequency

SW Corridor Light Rail

- 12-mile MAX light rail line
- Tigard, Tualatin and surrounding communities
- Road, bicycle & pedestrian improvements
- \$2.4 billion YOE





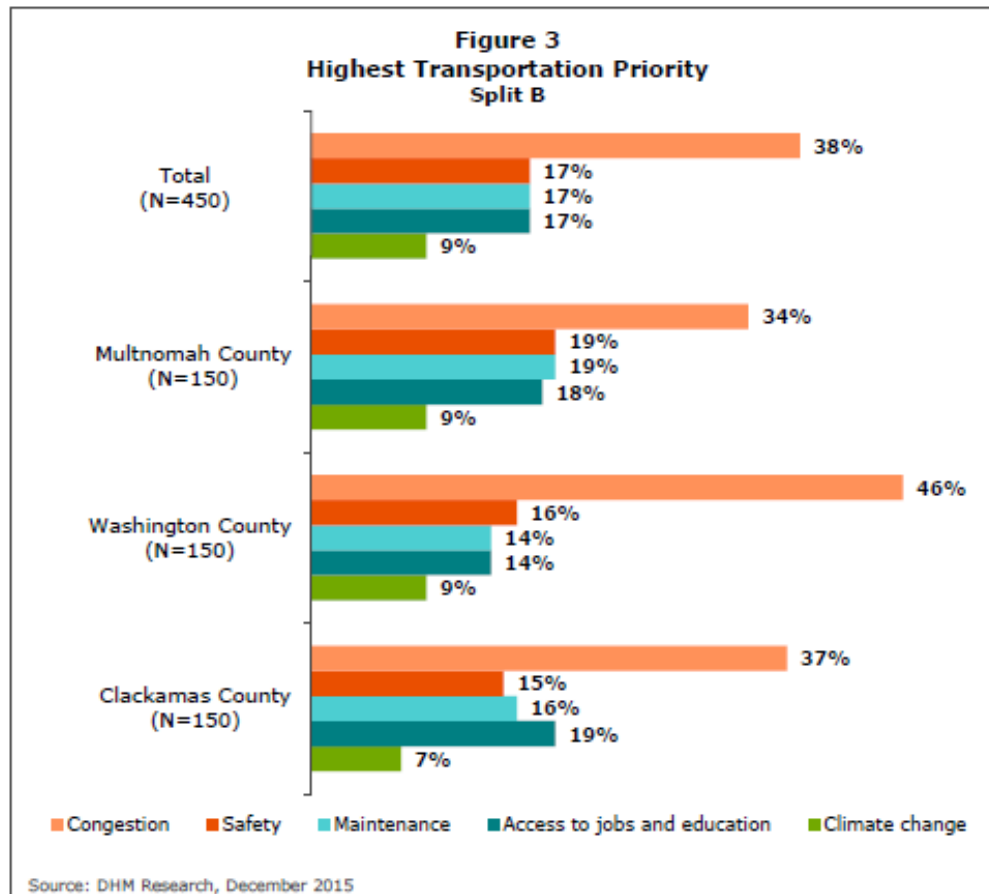
Light Rail Funding Sources

- Federal New Starts
- State Lottery
- Regional Flexible Funds
- Local Contributions
 - Urban Renewal
 - SDCs
 - TriMet Bonding

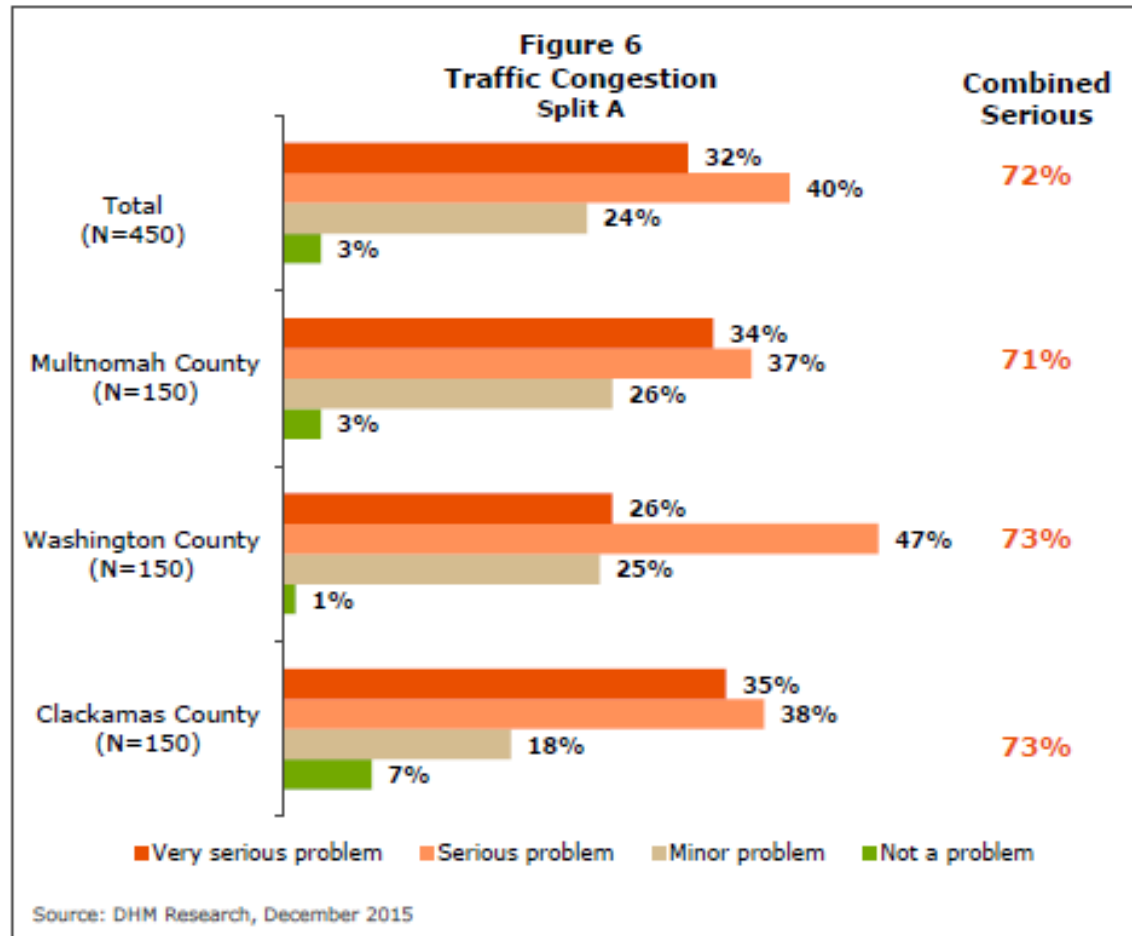
What does the Public Think?



Congestion is a Key Concern

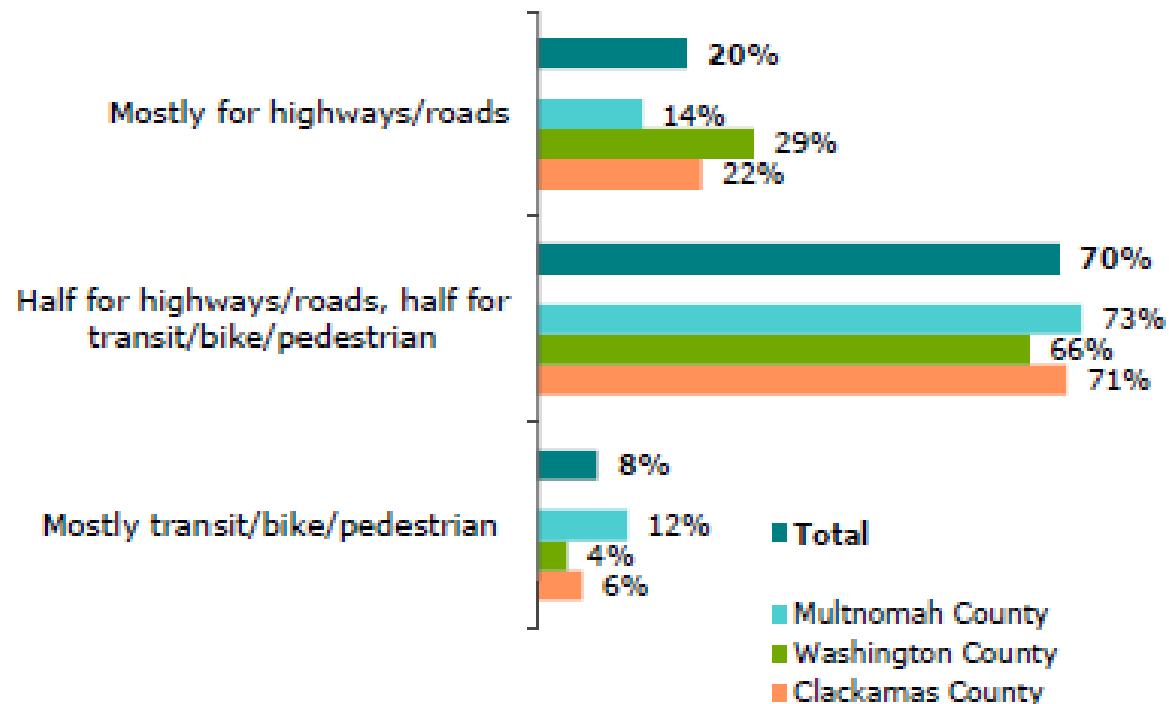


Intensity of Concern is High



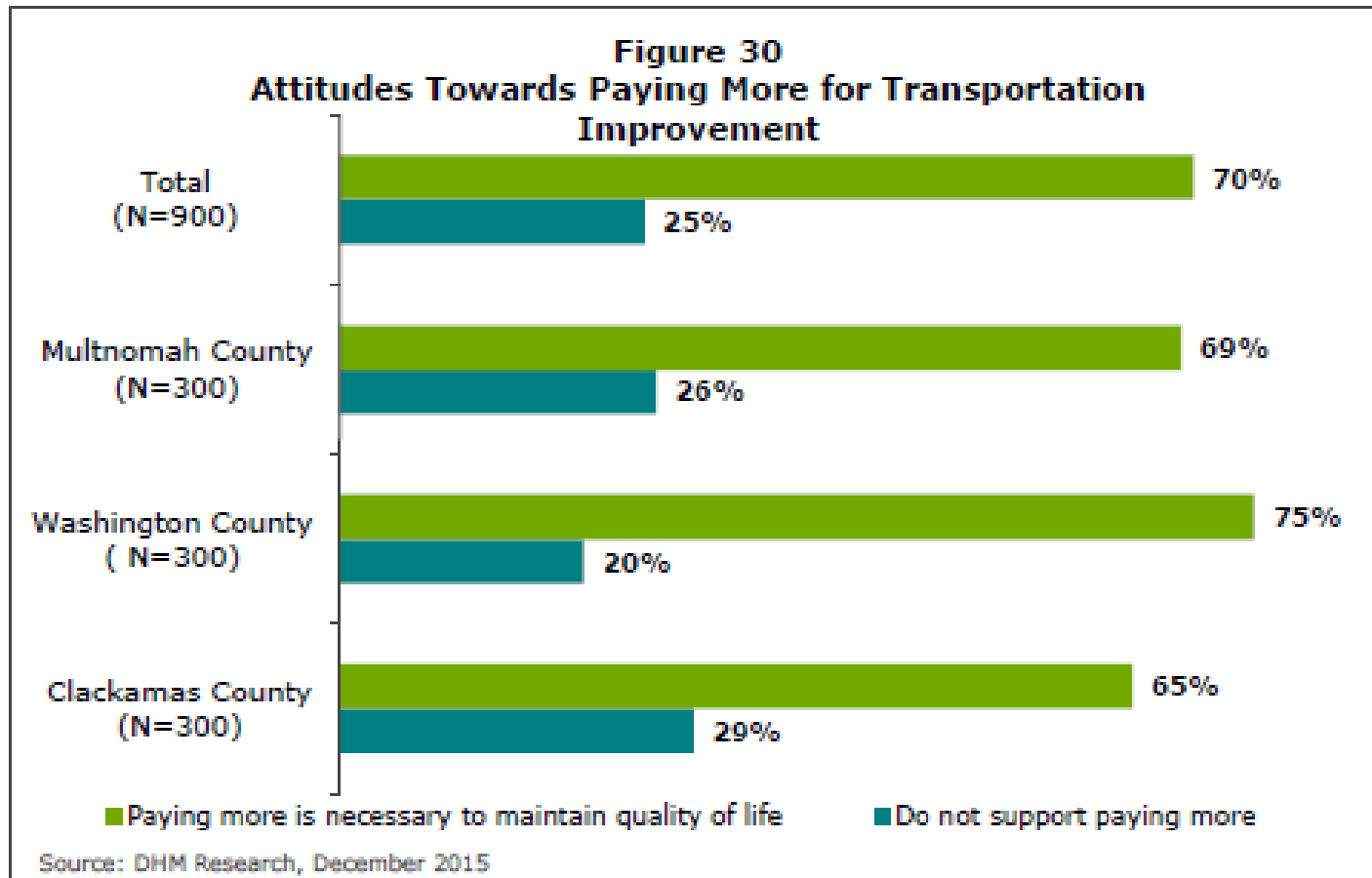
Mix of Project Types

Figure 12
Proportion of Funding Among Project Types



Source: DHM Research, December 2015

Public Supports Improvements



SW Corridor Funding Strategy

2016 MTIP Project Funds

- SW Corridor Light Rail
- Regional Highway Project Development
- Active Transportation Project Development

November 2016 Tigard Vote

2017 Legislative Session

- Transportation Package, lottery
- TriMet Spending & LUFO Authority

Fall 2017

- Regional Funding Measure Agreement

2018 Regional Funding Measure

- SW Corridor
- Major Congestion Projects, etc.



2017 Legislative Agenda

- Transportation Package
- Lottery Allocation
- LUFO legislation



Regional Funding Measures

- **Seattle:** \$930M + \$50B (!!)
- **Washington State:** Approved \$16B transportation measure
 - \$1B multi-modal
 - \$15B authority for Sound Transit
- **San Francisco:** Approved \$500M bond measure for streets and transit
- **Alameda County:** \$7.8B measure passing
 - \$5B to transit, bike and ped improvements
 - \$2.2B to roads & highways



Challenging...But Doable

